

# ROCKMAX<sup>®</sup> TOP

## ONE PART CONCRETE REPAIR MORTAR



### INTRODUCTION

**Rockmax TOP** is one part polymer modified fiber reinforced cementitious repair mortar. It contains selected grade of fillers to become smooth surface. The product provide high strength and good bonding to existing substrate. It can use for both precast concrete and cast in situ concrete.

### AREA OF USES

- Repair horizontal and vertical concrete.
- Repair pre-cast concrete work.
- Fill void in concrete structure.
- Strengthening concrete structure.
- Increase depth of concrete girder.
- Modify and adjust concrete member.

### ADVANTAGES

- Good adhesion.
- High strength.
- Ready to use.
- Non shrinkage.
- Non corrosive.
- Good abrasion resistance.

### TECHNICAL PROPERTIES

Color: Grey (cement)

Density: approx 1.7-1.8kg/litre (mortar)

Pot life: approx 40-45 minute

Compressive strength: >45 N/mm<sup>2</sup> (28days)

Flexural strength: > 6 N/mm<sup>2</sup> (28days)

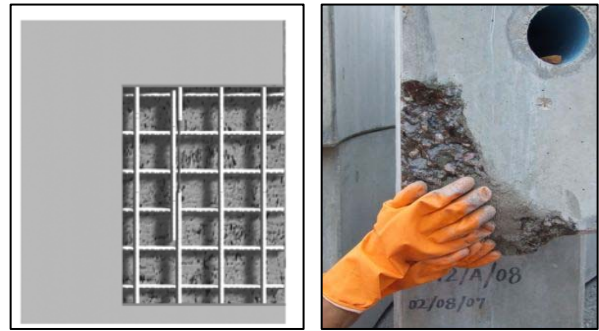
Bond strength: > 1.5 N/mm<sup>2</sup> (28days)

Thickness per layer: up to 25mm (Horizontal and depend on surface preparation)

Working temperature: 5°C-40°C degree

### PREPARATION

Concrete substrate must be clean and free from oil, grease, dust, particles, mould oil, curing compound. Concrete substrate must be at least 28 days old and include compressive strength of 25Mpa. Shape concrete by grinder machine to receive thicken layer (approximate 10mm thick). All edge must be shape until receive smooth and sound concrete substrate. Soak water until concrete saturated. Bonding agent should be applied to increase bonding strength.



### MIXING

Mixer must use low speed drill mixer (500 rpm) with and including good quality steel paddle. Make sure all tools and equipments are in good conditions and clean. Measure 3.5litre for 25kg bag of **Rockmax TOP**. Add material slowly into water while mixing. Mix continuous for approximate 3 minute until homogeneous. Adjust water if the mortar is not workability.

### APPLICATION

Use steel trowel patch repair mortar to prepared substrate. Working wet on wet with bonding agent. Apply only 20-25mm per layer. Compress the repair mortar with rubber hammer. Build up next layer if required. Finishing by steel trowel on top of surface. For vertical area, epoxy bonding or latex bonding must be applied. The thickness for vertical area is not more than 10mm per layer. Do not mix with Portland cement.

### CURING

Curing by spray water or wrap with plastic sheet for prevent drying up of mortar.

### CLEANING

Clean all tools and equipment immediately after application with water.

### LIMITATIONS

- Repair on horizontal excess 25mm. build up by layer.
- Repair on vertical must be use epoxy bonding agent or consult Rockmax for further advice.
- Do not mix with Portland cement.

# ROCKMAX<sup>®</sup> TOP

ONE PART CONCRETE REPAIR MORTAR



## PACKAGING

25kg bag.

## STORAGE

Storage in shade and dry condition Avoid from frost, water, moisture and high temperature.

## SHELF LIFE

12 months if kept follow instructions.

## PRECAUTIONS

Avoid contact with skin and eye. Goggle and glove must be use while application. Standard safety precautions must be followed. Clean with plenty of water when contact with mortar and see doctor as quick as possible. MSDS is available upon request.

## CONTACT DETAIL

THAILAND

**Rockmax Company Limited**

T: +66 2 8648658

F: +66 2 4184327

E: info@rockmax.net

W: www.rockmax.net

VIETNAM

**Viet Dai Viet Chemical Company Limited**

T: +84862615184

F: +84862615185

E: rockmaxvn@gmail.com

---

### *IMPORTANT NOTE!!*

*The technical information contained herein, while not guaranty, was prepared and approved by technical personnel and is true, accurate to the best of our knowledge. No warranty or guaranty is made regarding performance, stability or other factors beyond our control. Rockmax will welcome to be consultation of our performance and application. This technical datasheet supersedes and issue new edition without prior notice.*